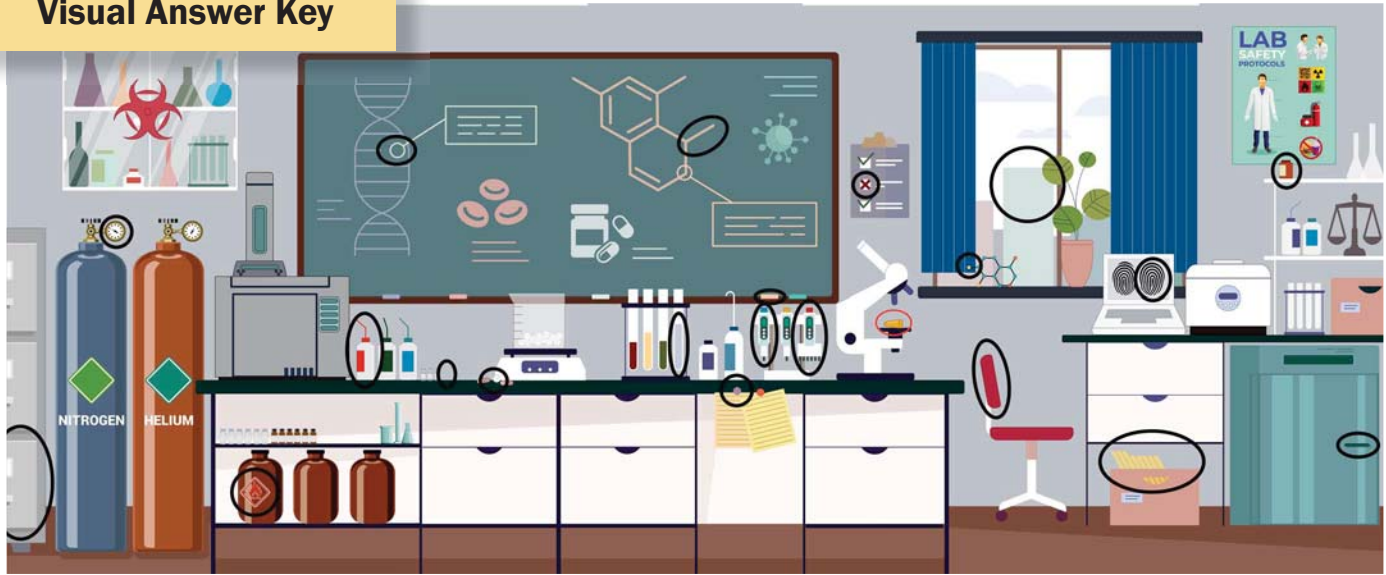


Spot the Difference: Answer Key

Visual Answer Key



Compared to the Original Image, the Altered Version has the following differences:

1. The amount of gray substance in the rightmost test tube on the main work bench has increased.
2. One of the pink capsules next to the scale on the main workbench is missing.
3. The bottom drawer of the filing cabinet on the far left is closed and there is no longer a file sticking out of the open drawer.
4. The pressure dial has changed on the Nitrogen tank pressure gauge.
5. The red and white squeeze-top solvent bottle next to the GC/MS has rotated so that the label is facing the left side and the spout is pointing left.
6. The orange chalk has moved towards the right of the ledge.
7. The lead bullet (gray) on the microscope stage has changed to a brass bullet (yellow).
8. The checklist posted next to window has a red X on the middle item instead of a green checkmark.
9. The fourth GC vial on the right of the GC vials on desktop is missing.
10. Flammable warning label has moved from the rightmost to the leftmost amber organic solvent container.
11. The molecule model on the windowsill has an extra bond with a yellow element on the left hexane ring.
12. The back of the desk chair is slightly reclined.
13. The green-tinted building in the window is taller.
14. The right fingerprint impression on the laptop has changed from a right loop to a left loop.
15. The door handle of the miniature refrigerator under the desk has switched sides.
16. The small brown bottle on the top shelf of the desk has moved towards the left edge.
17. The red-capped multi-tip pipettor has swapped places with the blue-capped single pipettor in the pipette stand on the workbench.
18. The structure on the chalkboard is missing one double bond on the outside of the bottom ring.
19. The DNA molecule on chalkboard is missing a base in one of the central base pairs (half line).
20. The case files in the brown box under the desk are leaning to the left.
21. One of the orange clips holding the papers to the workbench in the foreground has changed color to lavender.