

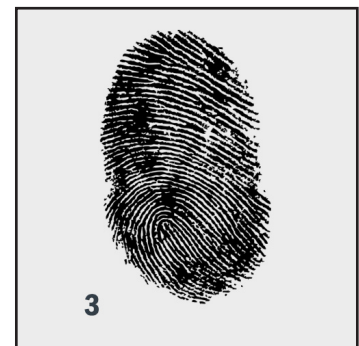
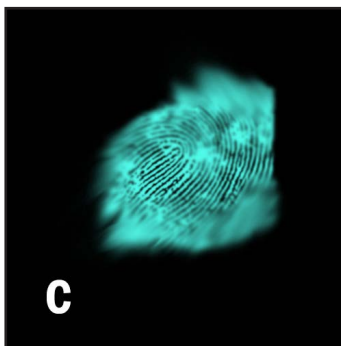
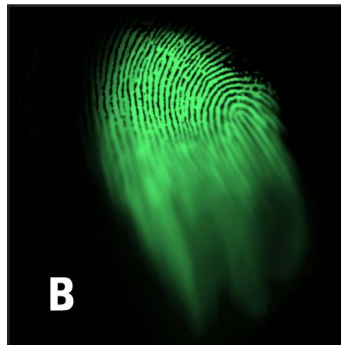
Fingerprint Source Identification Activity

Brought to you by the National Institute of Justice's Forensic Technology Center of Excellence (FTCOE)

Latent Print (A–T)	Known Print (1–20)
A	16
B	8
C	3
D	9
E	20
F	1
G	15
H	5
I	19
J	14
K	17
L	4
M	11
N	6
O	18
P	7
Q	2
R	12
S	13
T	10

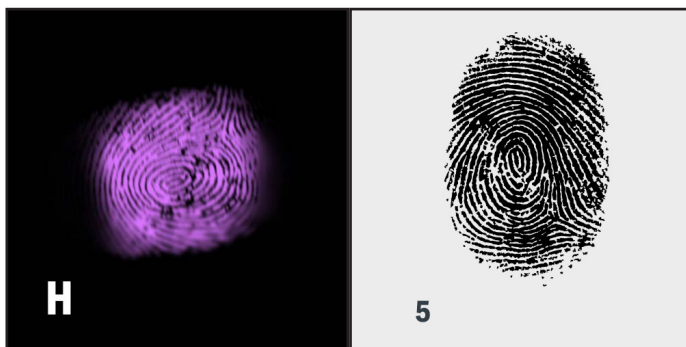
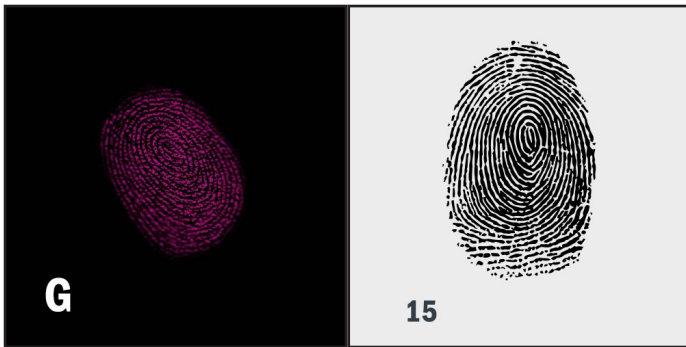
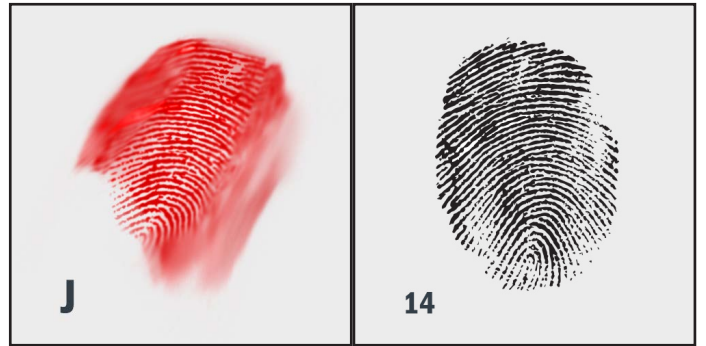
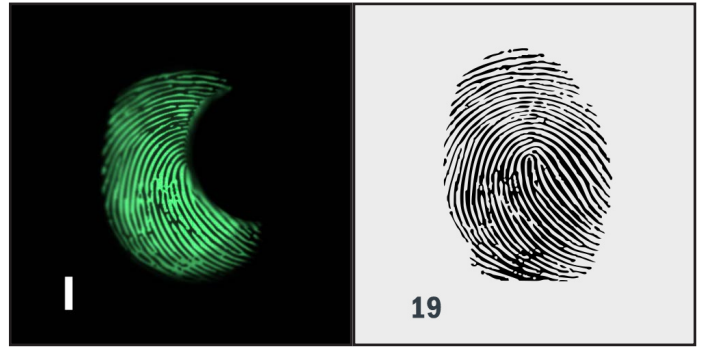
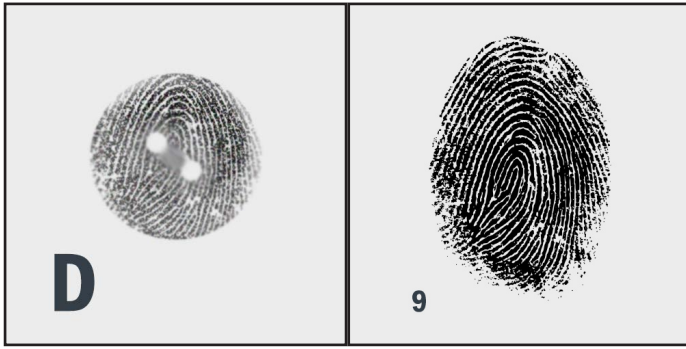
Answer Key

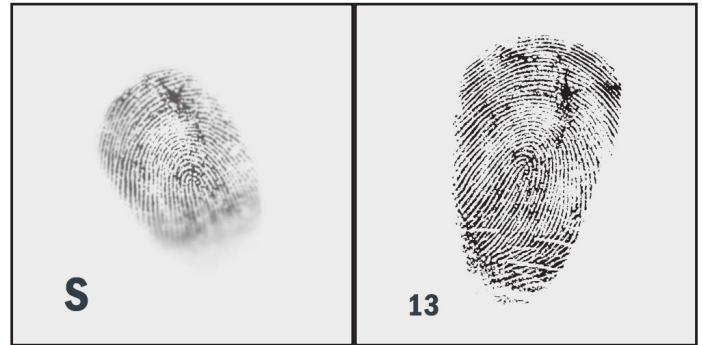
Thanks for playing! Check your answers below.



The Forensic Technology Center of Excellence (FTCOE), led by RTI International, is supported through a Cooperative Agreement from the National Institute of Justice (15PNIJ-21-GK-02192-MUMU), Office of Justice Programs, U.S. Department of Justice. Neither the U.S. Department of Justice nor any of its components operate, control, are responsible for, or necessarily endorse, this printed material.







Did you know?

Patterns alone do not make fingerprints unique. The minutiae found on the ridges and the spatial arrangements of the minutiae relative to one another are what make fingerprints, palmprints, and even bare footprints discernible from one another.

The Forensic Technology Center of Excellence (FTCOE), led by RTI International, is supported through a Cooperative Agreement from the National Institute of Justice (15PNIJ-21-GK-02192-MUMU), Office of Justice Programs, U.S. Department of Justice. Neither the U.S. Department of Justice nor any of its components operate, control, are responsible for, or necessarily endorse, this printed material.